

Stichting hiv monitoring

Founded in 2021 Stichting hiv monitoring (SHM) is tasked by the Dutch Ministry of Healthcare, Welfare and Sports to continually monitor and report on all aspects of HIV infection and treatment across the population of people with HIV in the Netherlands.

In collaboration with all HIV treatment centres and sub-centres across the the country, SHM has developed a robust framework for systematically collecting long-term HIV data from all registered, consenting, people with HIV in the Netherlands.

The Netherlands is the only country in the world to have such an extensive framework which enables healthcare professionals to aspire to the highest standard of HIV care.

In addition to our national-level reporting, we also provide healthcare professionals with reports at treatment centre level to enable them to monitor and optimise care provided in their centres.

SHM data are also made available upon request for national and international research purposes.

With our research and international collaborations we aim to offer all those working in the space of HIV latest insights to enable more informed decision-making around HIV care and prevention programmes, both within the Netherlands and abroad.

For more information: www.hiv-monitoring.nl

 [stichting hiv monitoring](https://www.linkedin.com/company/stichting-hiv-monitoring)

 [@hivmonitoringnl](https://twitter.com/hivmonitoringnl)

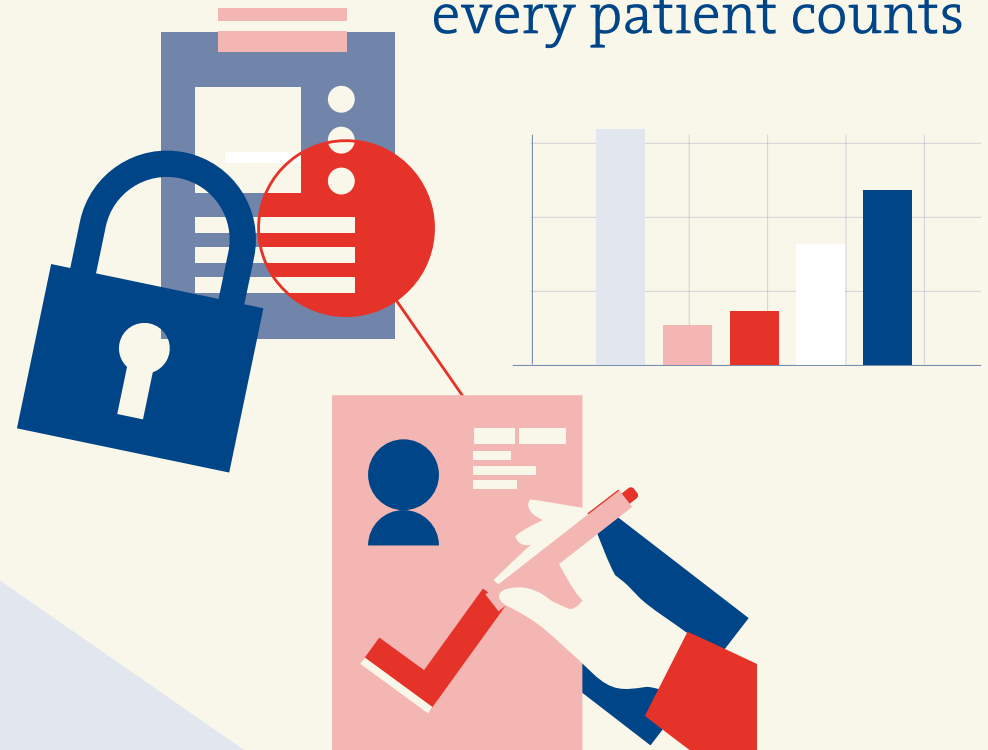
 [hivmonitoring_nl](https://www.instagram.com/hivmonitoring_nl)

Send us an email: hiv.monitoring@amsterdamumc.nl

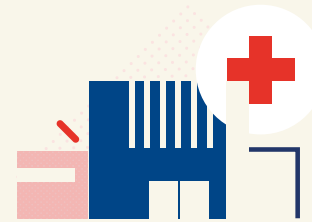
© All rights reserved. No permission is given for the reproduction or publication of the content of this publication in any form or by any means, or storage in any retrieval system without prior written approval by the authors.

Stichting hiv monitoring

From diagnosis to optimal treatment: every patient counts



From diagnosis to optimal treatment how medical data contribute to HIV care



HIV care in designated centres

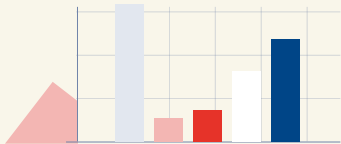
If you are diagnosed with HIV in the Netherlands you are referred to a designated HIV treatment centre. At each hospital visit the HIV treatment team records information in your medical file.

Improving care at hiv treatment centres

In addition to national-level reporting, SHM provides HIV healthcare professionals with reports at treatment centre level to enable them to monitor and optimise care provided in their centres.

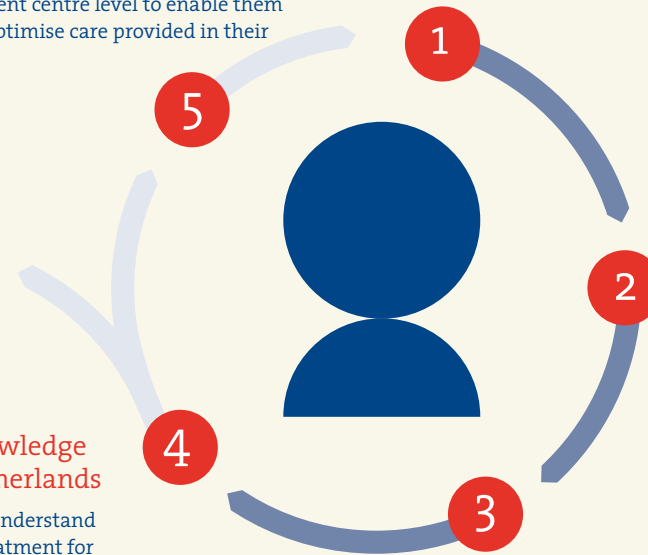
SHM contributes to global HIV research

Our data are also used in national and international HIV research. This research provides tangible input into HIV treatment guidelines and prevention policies, and leads to improvements in HIV care worldwide.



SHM furthers knowledge on HIV in the Netherlands

SHM research helps to understand the effect of lifelong treatment for people with HIV. SHM's most important publication is the annual HIV Monitoring Report.



SHM collects medical information for research

With your explicit consent SHM collects your medical information at the HIV treatment centre. Your HIV treating physician or nurse consultant will ask you for your consent. You are of course free to withdraw your consent at any time. This will not affect your treatment. Please check our website for current information regarding patient consent and patient rights: www.hiv-monitoring.nl



Your privacy

SHM adheres to the European GDPR and all national privacy regulations for medical research. As a result, none of the information collected by SHM can be directly traced back to an individual.

High quality data

Research requires accurate and reliable data. SHM conducts various rigorous quality control steps. Links can also be made with other databases. Datasets are stored in our highly secured 'data warehouse' ready for research purposes.



Stichting hiv monitoring (SHM), is tasked by the Dutch Ministry of Healthcare, Welfare and Sports to continually monitor and report on all aspects of HIV infection and treatment across the population of people with HIV in the Netherlands. The nationwide reach of our data collection, the extensiveness of the type of medical data we collect as well as our robust data infrastructure capabilities, allows us to conduct most comprehensive analyses with which we also contribute to both national and international research. With our outputs we aim to offer all those working in the space of HIV latest insights to enable more informed decision-making around HIV care and prevention programmes.